

The background features a large, faint watermark of the Brown University crest. The crest includes a shield with a red cross, a sun with a face above it, and a banner at the bottom with the Latin motto "IN DEO SPERAMUS".

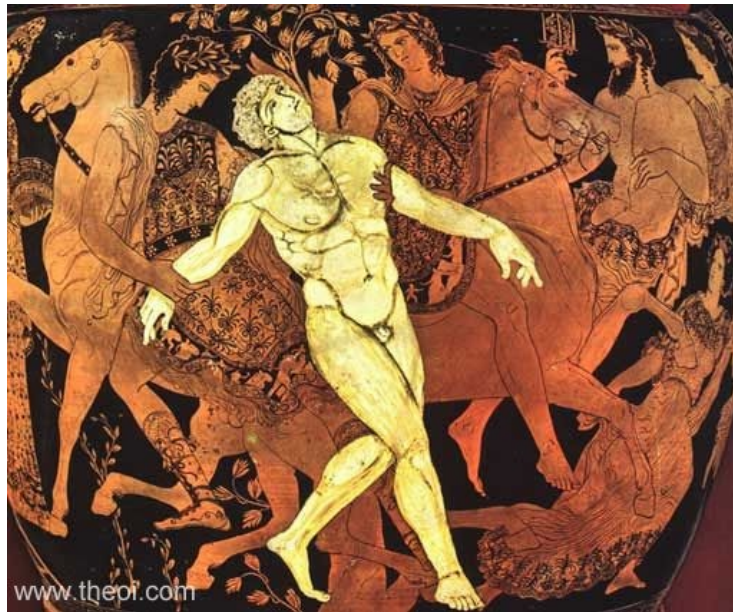
The Philosophy of Artificial Intelligence

George Konidakis
gdk@cs.brown.edu

Fall 2021

AI: The Very Idea

For as long as people have made machines, they have wondered whether machines could be made intelligent.



(pictures: Wikipedia)

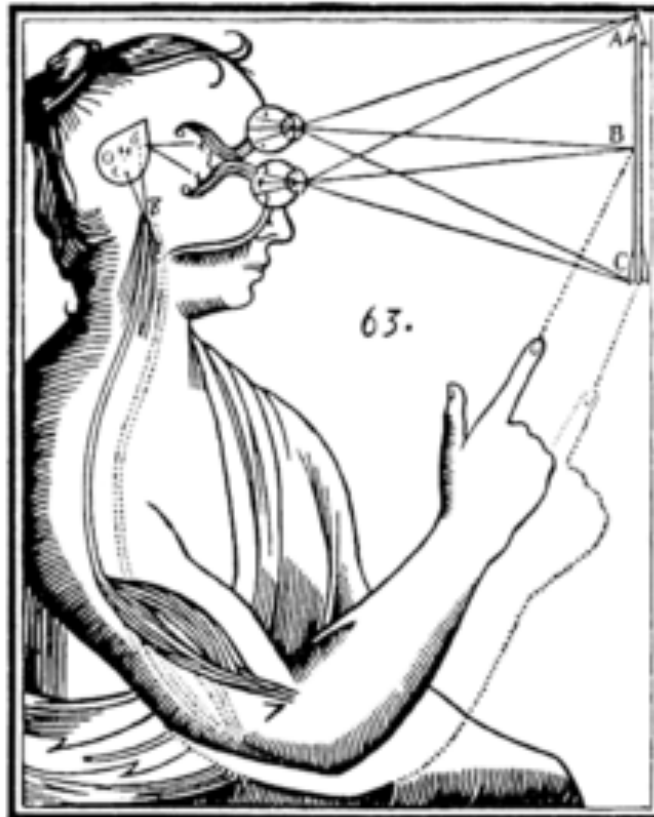
The Mind-Body Problem



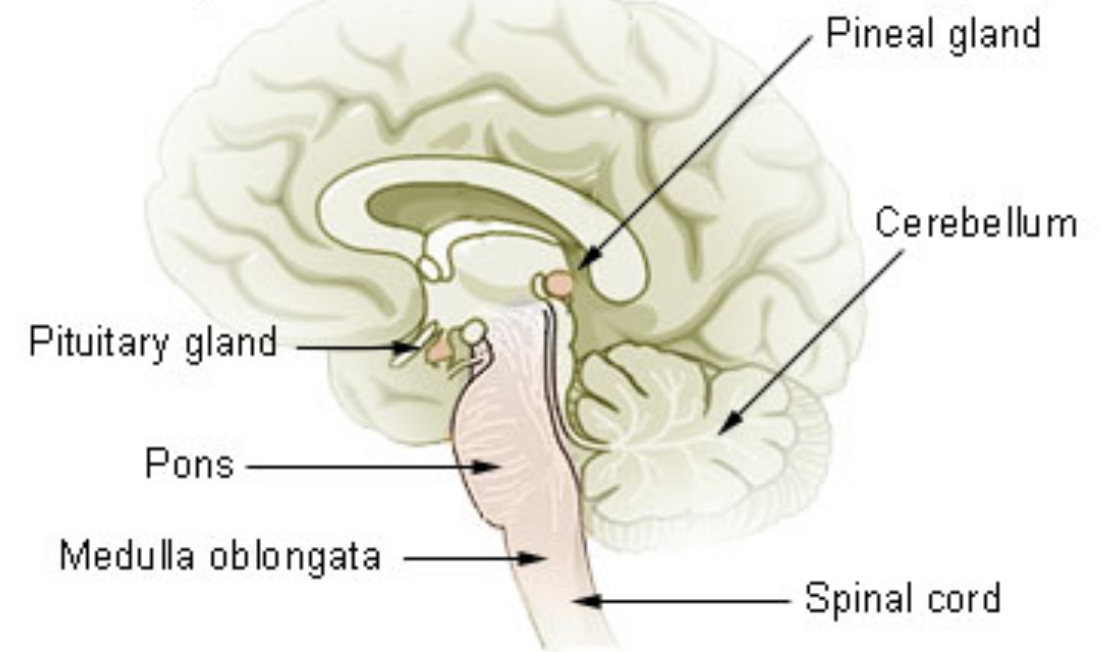
What Are Minds Made Of?

Dualism

- Mind and body are two different things
- Mind non-physical



Pituitary and Pineal Glands



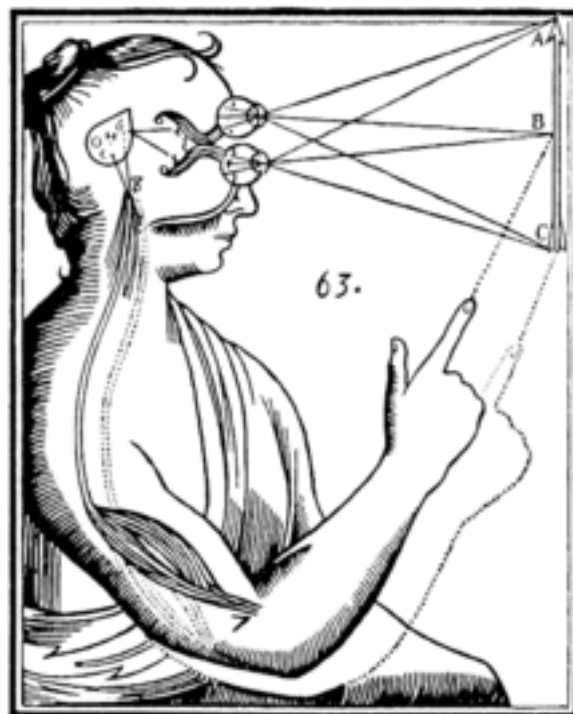
What Are Minds Made Of?

Materialism

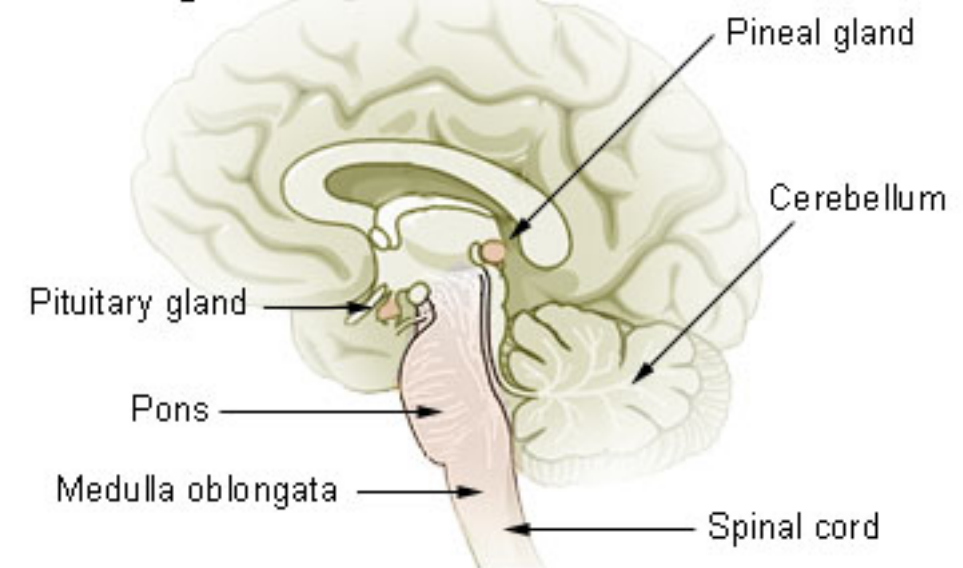
- Only material objects exist
- Mental states are physical states

“Brains cause minds”

- Because of what they are: *Biological naturalism*
- Because of what they do: *Functionalism*



Pituitary and Pineal Glands

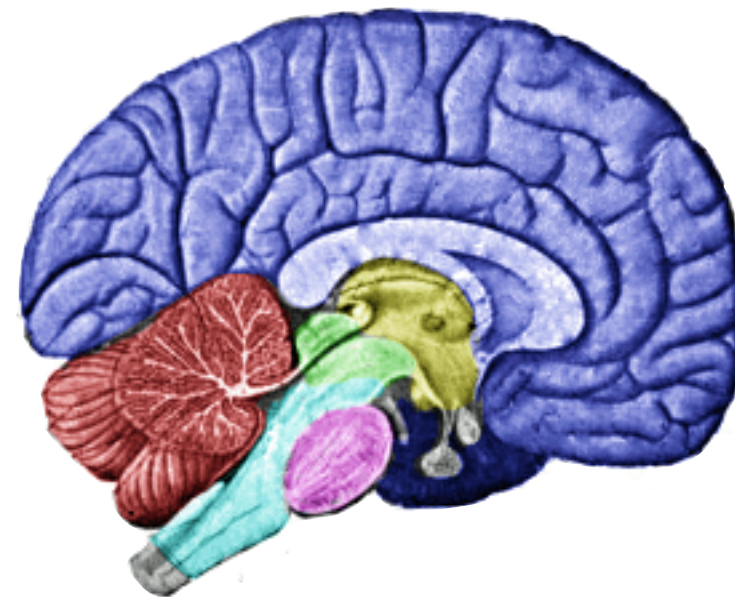
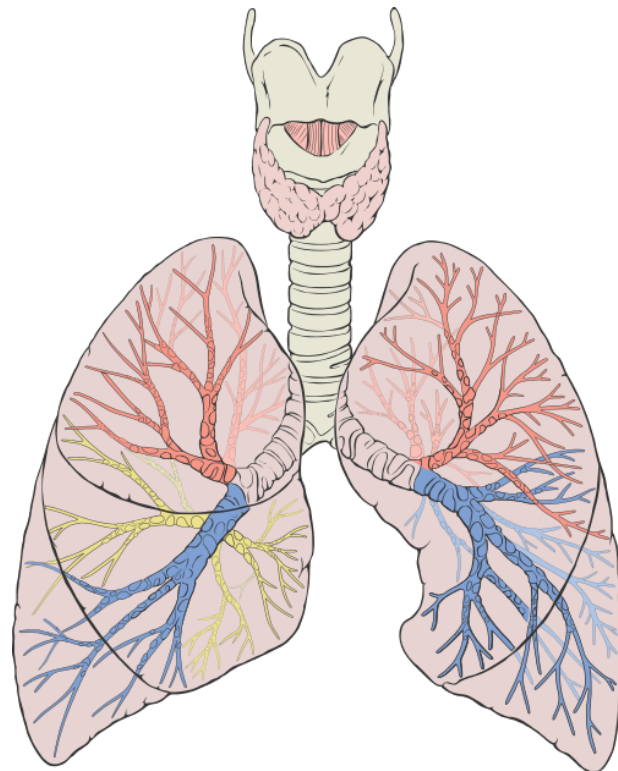


Computation

What is computation?

Information processing process.

- Symbols and rules for operating on symbols.
- The symbols and the rules matter.
- The physical substrate doesn't matter.



Core AI Hypothesis

“The brain is a computer.”



=



(picture: Wikipedia)

The Weak AI Hypothesis

Weak AI Hypothesis:

- A computer program can be built that acts as intelligently as a human.
- This is about *behavior*.
- It makes no claim about *minds* or even *thought*.
- Not even about practicality: asks *whether it can be done in principle*.

c.f. rational agent.



Turing



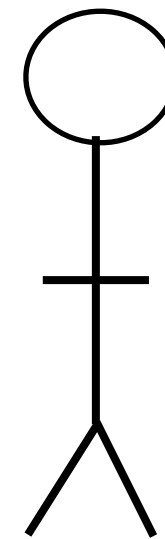
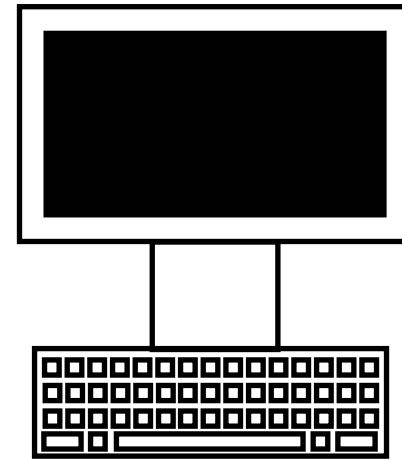
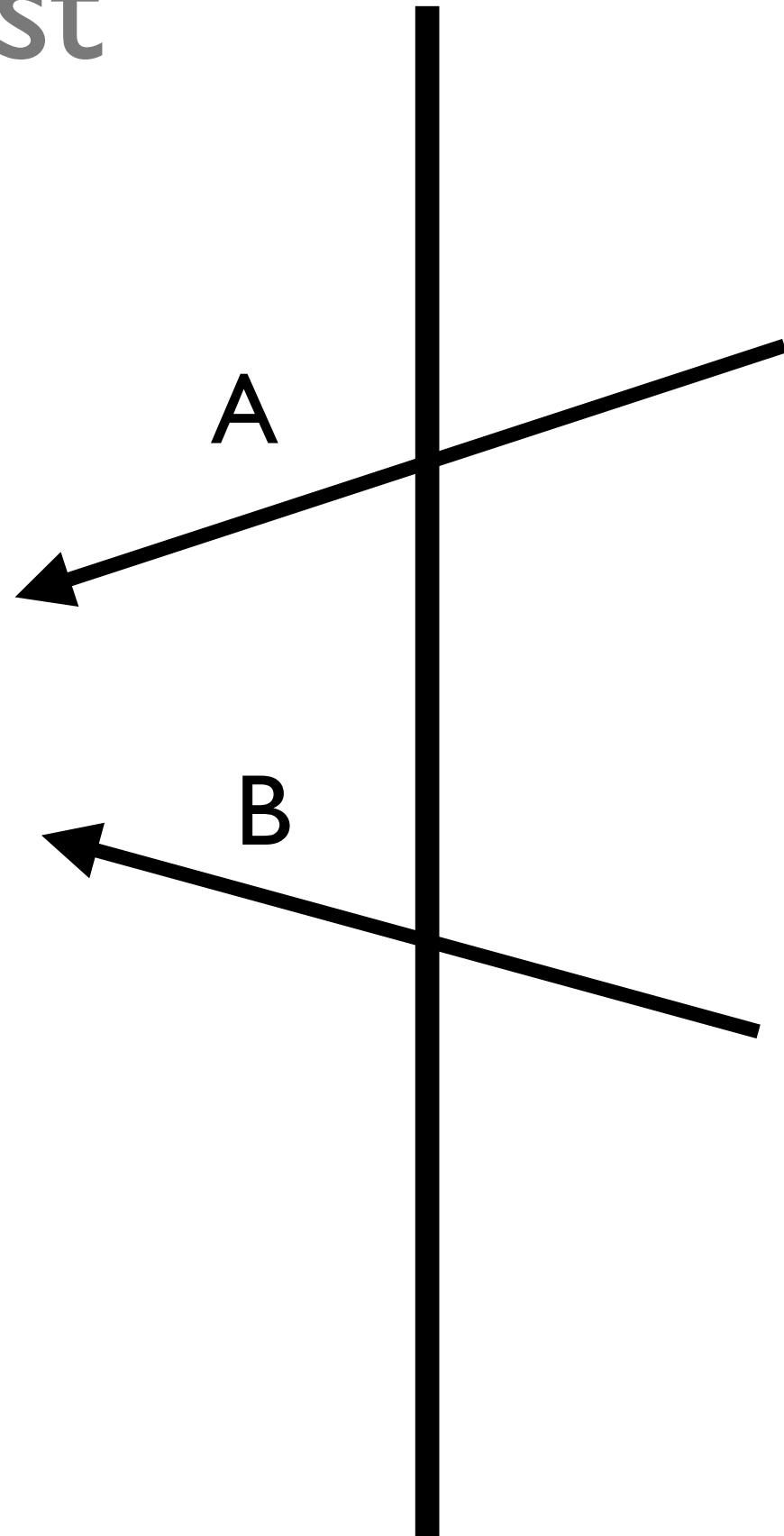
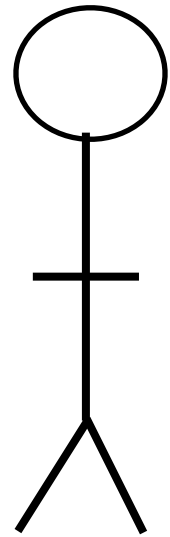
Computing machinery and intelligence. *Mind*, October 1950.

“Can machines think?”

(picture: Wikipedia)



Turing Test



Objections

The Theological Objection

The Mathematical Objection

The Argument from Consciousness

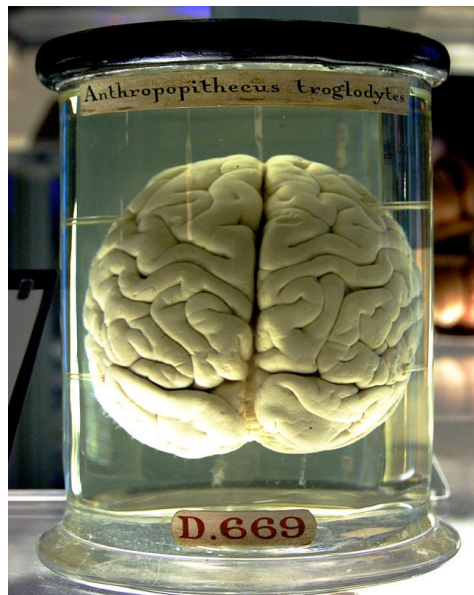
The Argument from Various Disabilities



The Strong AI Hypothesis

Strong AI Hypothesis:

- A machine that behaves as intelligently as a human has a mind and is thinking.
- Takes the Weak AI hypothesis as a given.
- This is a claim about *minds* and *thought*.

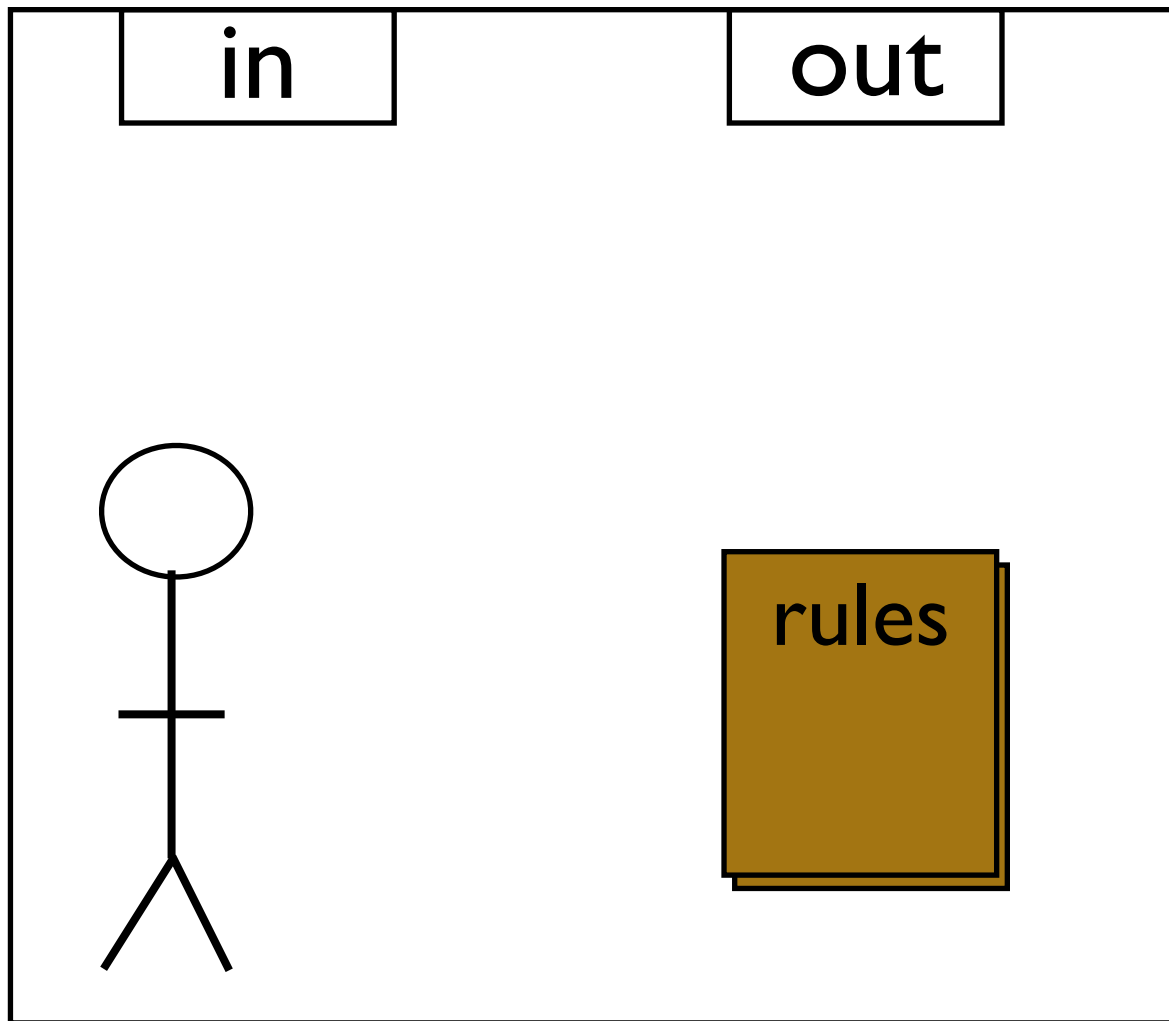


=

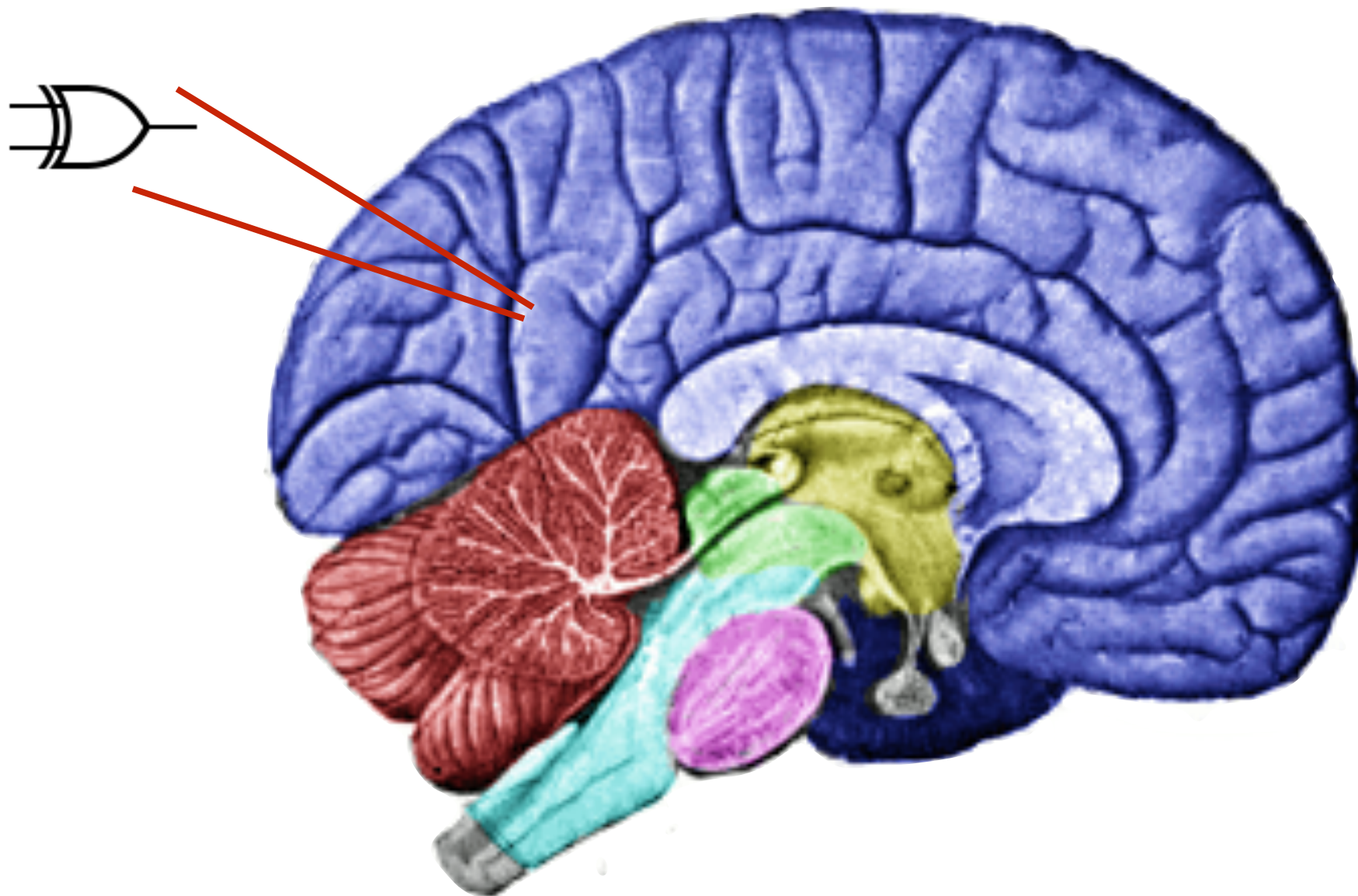


The Chinese Room

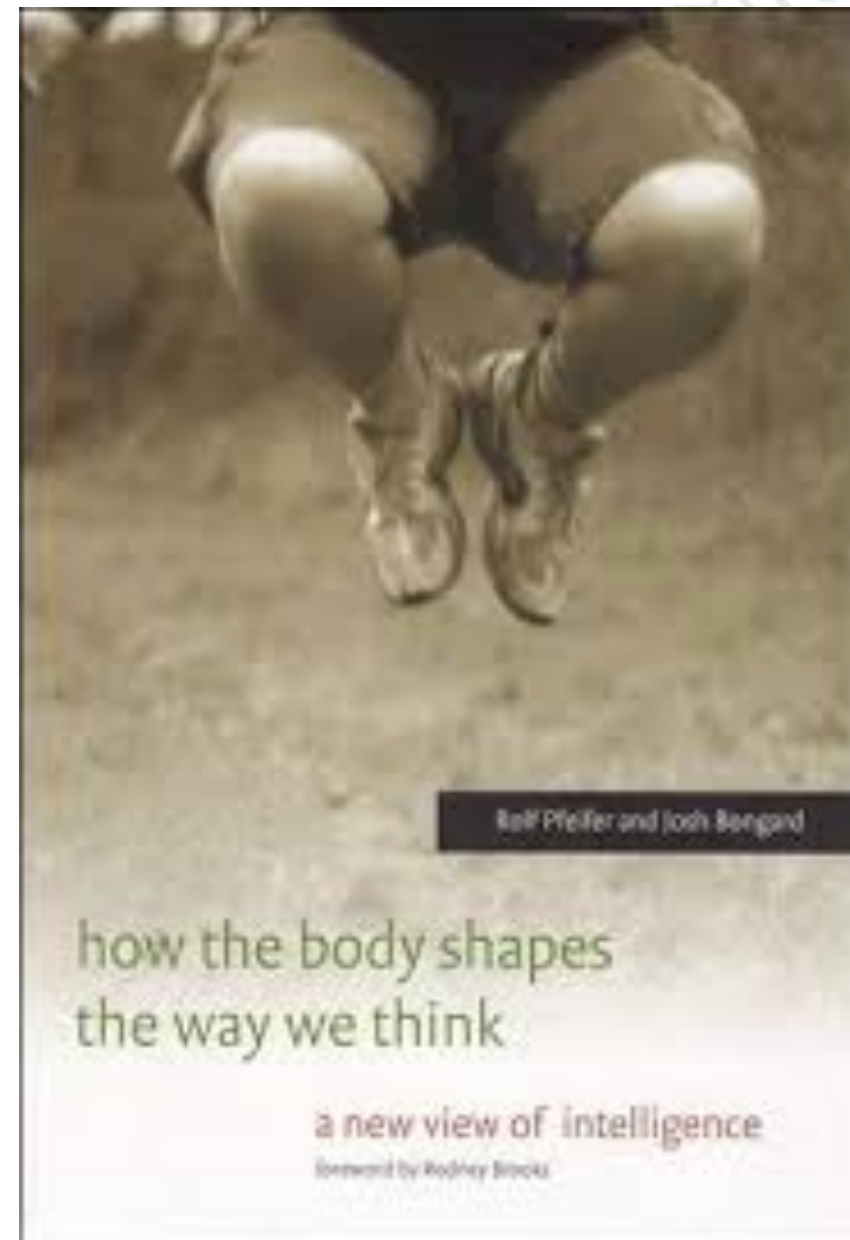
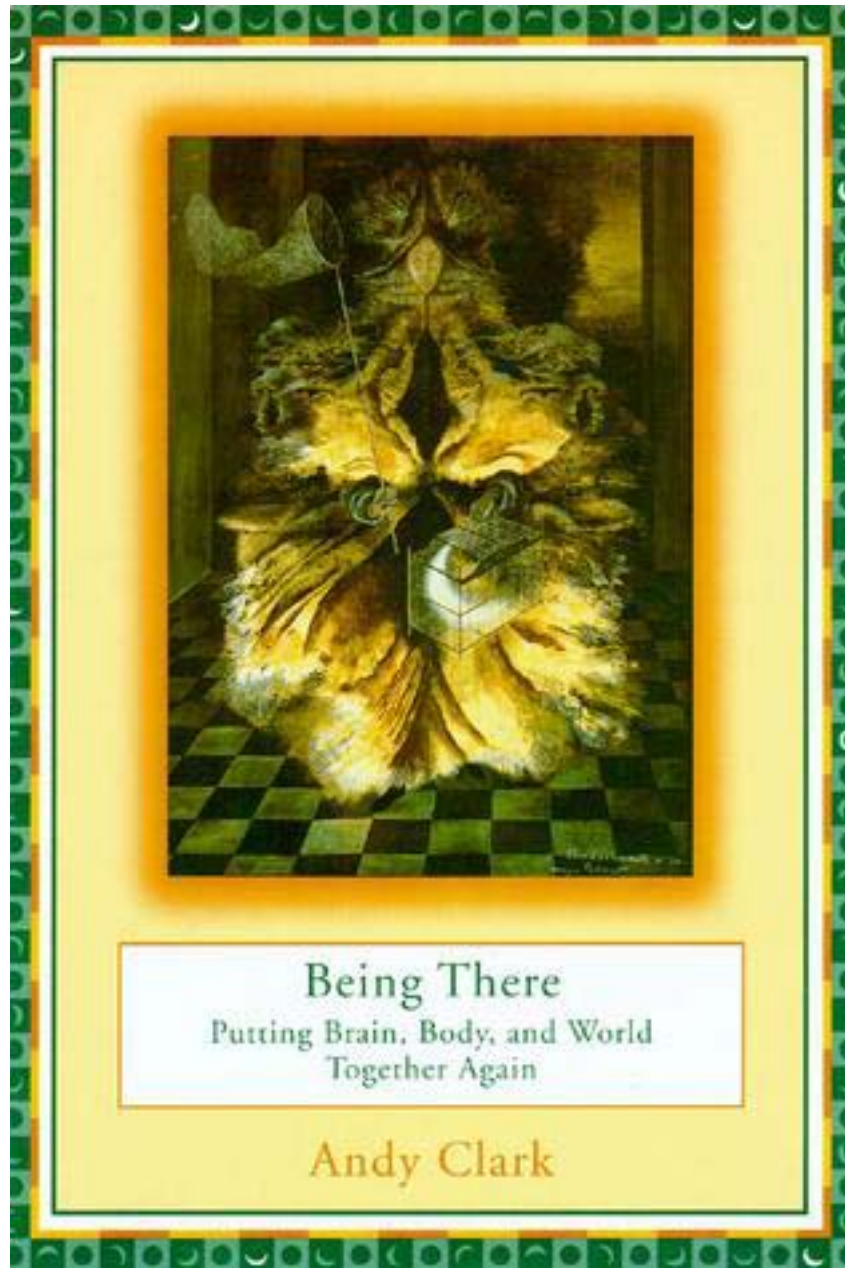
Where's the mind / understanding / consciousness?



The Brain Replacement Experiment



Embodied Intelligence



Collective Intelligence



Questions

What do we mean by:

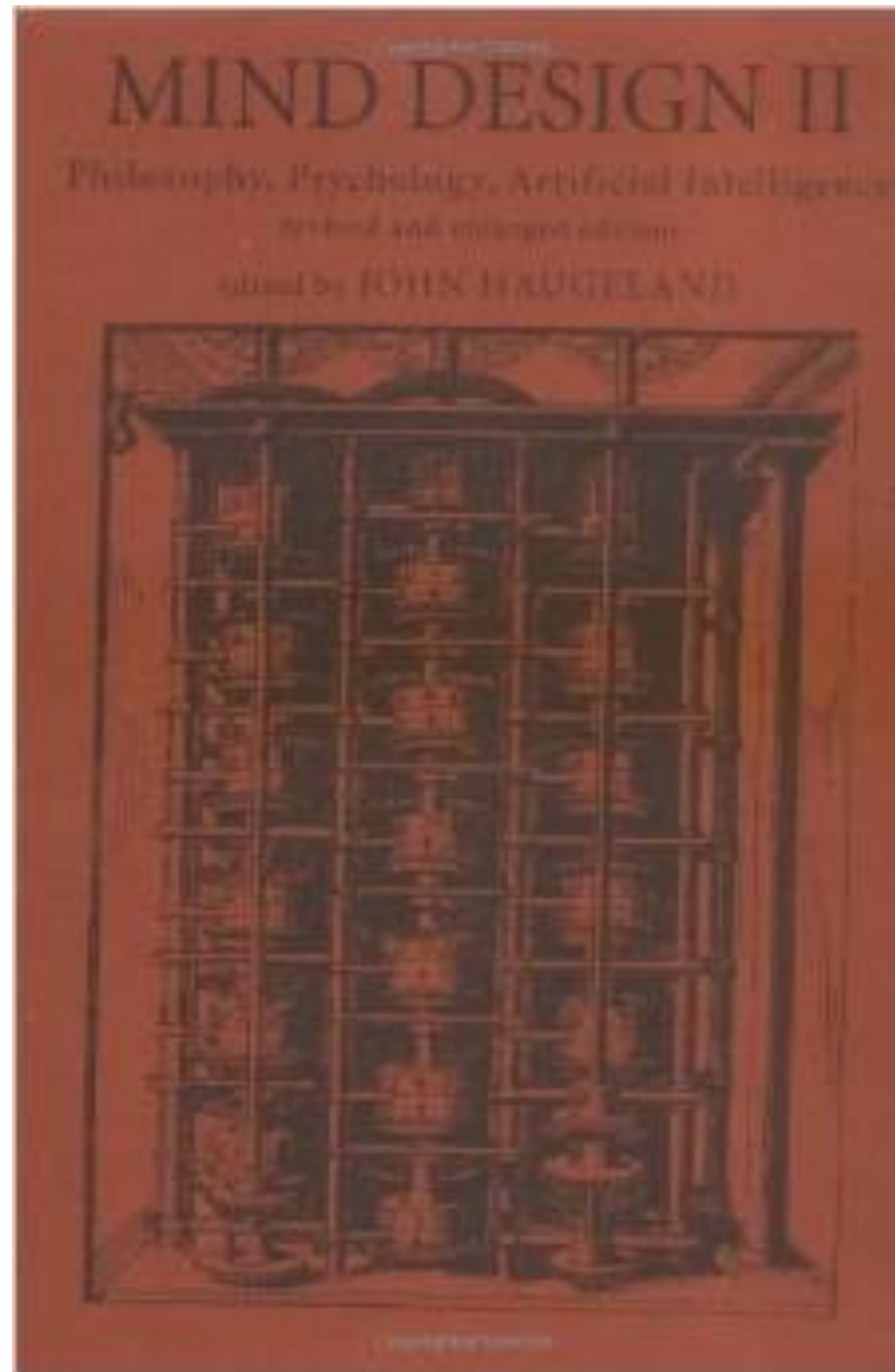
- Mind
- Consciousness
- Thought
- Intelligence

How can we explain or define subjective experience?
Is it susceptible to objective analysis or definition?

Can it be reproduced by a computer program?



Highly Recommended (but dated)



Highly Recommended (but dated)

